



MANUAL

Extreme USB Box - general information	2
Manual Driver Installation for eXtreme USB Box (switch position NORMAL)	4
Virtual COM Port VCP	6
Manual Driver Installation for VYGIS USB-RS232 cable (switch position VYGIS)	10
Manual Driver Installation for S2GSM cable (switch position S2GSM)	13
Port Administration software	16
Manual Port Administration	18

Extreme USB Box - general information



Extreme USB Box it's advanced hardware working only on USB port and enable you to transfer data from PC to phone and vice-versa with speed up to 0,5 Mbit./s ! By this Box are 4x faster that normal COM cable but it's not only advantage of this item. It has build on USB HUB for connection other USB devices to this box as USB HASP and build on full support modules for S2GSM and Vygis software on full speeds up to 460800 kb/s !!! It's great especially for people that have Universal Box v3.0 or v2.0 or UltraLOGIC since they can use cables from these Boxex to work with this unit. By buying this item you can work with all softwares for over 300 phones and support such standards as S2GSM for new Alcatel or Vygis for Mitsubishi, LG, Alcatel and others at 0,5 Mbit/s speed. We have

added special feature for change logic from 3V to 5V since it's useful for some phones – by this you can change by using only one dip switch logic from 3V as normal MAX3232 or 5V as normal MAX232. As you can see there are many advantages of this small Box so you can use it everywhere since no additional connection cables are needed, power supply etc – you need only one free USB port in your computer.

General information:

- advanced hardware working on USB port in v1.1 standard allows to transfer data up to 460800 kb/s !
- work without any problems under all operatign systems as Win95/98/Me/2000/Xp
- work with full speed 460800 kb/s at such phones as Alcatel, Mitsubishi, Siemens, LG on all PC's
- abblity to flash Siemens with cutted tracks using normal SWUP's due build in AutoIgnition mode
- easy change mode of S2GSm/Vygis/Normal by 3 position switch on back cover of device
- Box connect to PC using 1 USB cable – no need to have LPT, COM, power supply so it's totally movable between your area
- to one computer you may connect up to 127 eXtreme Box – you can flash up to 127 phones at once !!
- profesionally maked PCB in fabric with ISO9001 with full electrical tests
- possible to change mode to work from 3V to 5V logic – by this device will work as MAX3232 3V standards or MAX232 5V standard. This is needed for most newest phones such as OT756

How it works in practic:

Box works as a virtual port using Windows API – when you connect device for first time to your PC it will first recognise USB HUB and install it automatically. Since drivers for HUB controller are build into Windows shell then it will not request any drivers from you. After this will be finished your system will find device called S2GSM cable or Vygis Box or eXtreme. The type of device that it will recognise first depends on position of switch that are on back cover of hardware. If it's set to S2GSm first found device will be S2GSM cable, if it's set to Vygis first device will be Vygis, if to Normal first found device will be eXtreme Box. Driver are installed only once so we suggest to switch to all position at first runing to install all drivers – in future system will not request any drivers and load them automatically when it will only found proper device. After this your equipment are ready to work – in complete you will find small software that enable to change association for COM ports. Now just run software and you can start servicing phones.

NOTE: Some phones such as newest OT756 requires 3V logic so you need to change switch to 3V

Technical data:

- transfer up to 460800 kb/s via USB port
- build using chips FTDI FT232BM + USB HUB Alc. Mlc. 925
- easy logic voltage change mode from 3V to 5V by just moving a dip switch
- easy change mode of working type device by three position dip switch - S2GSM, VYGIS, NORMAL

- LED's of PWR (USB power supply), Rx (data from phone), Tx (data to phone), 5V (LED that gives information that 5V are powered on so device works in 5V logic state)
- build on USB HUSB using Alc. MIC. AU925 chipset

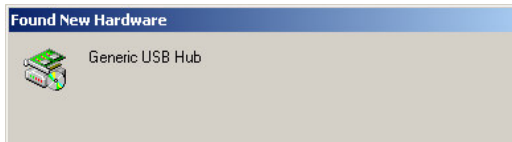
INFORMATION:

*** DOS based softwares will not work under this device since it's using Windows API virtual port for emulate COM – due this some programs may also have problem using this device and there are need to use normal RS232 cable or Universal Box.**



Manual Driver Installation for eXtreme USB Box (switch position NORMAL)

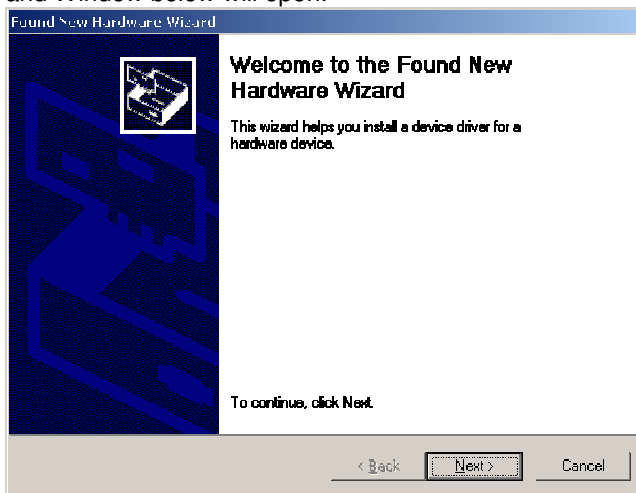
- 1) Connect hardware to your PC – after few seconds your system will find new hardware called Generis USB HUB as shown below.



- 2) Since Generis USB HUB drivers are build in in each Windows OS system you don't need to have any drivers for it. In case you got very old non-updated system please just update it using Windows Update page at <http://windowsupdate.microsoft.com/>
- 3) After correct installation of USB HUB system will find new device and notify about this fact.



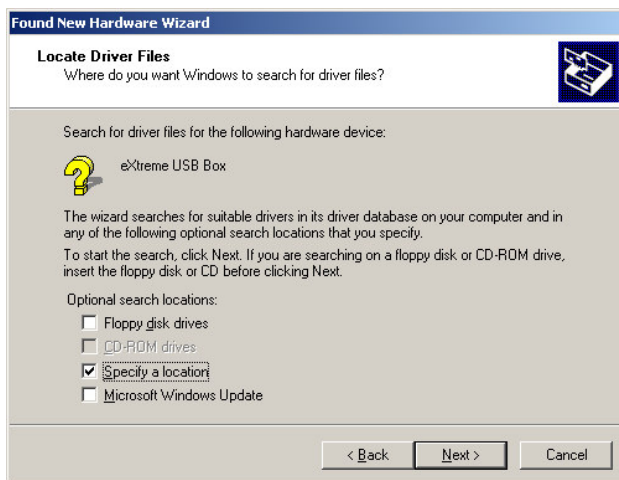
and Window below will open.



- 4) Click **NEXT**



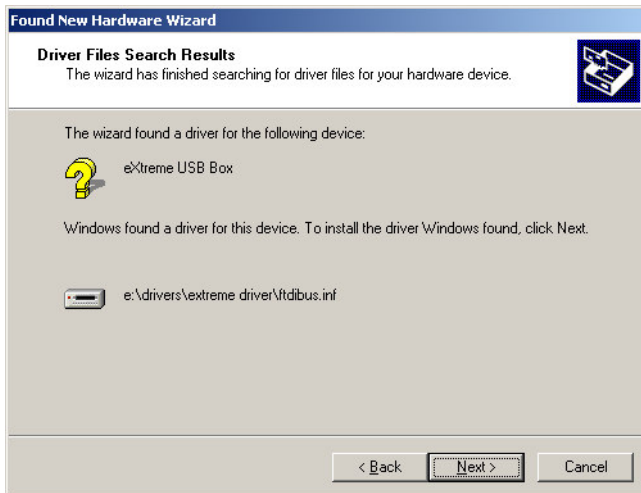
5) Choose “**Search for a suitable driver for my device**” and click **NEXT**



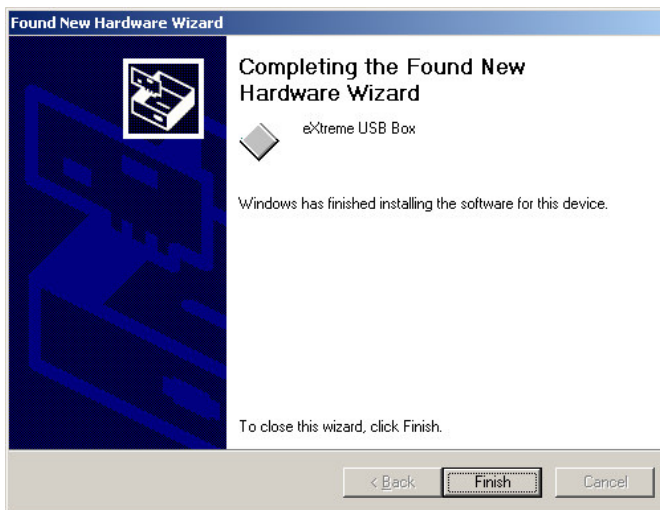
6) Check “**Specify a location**” and click **NEXT**.



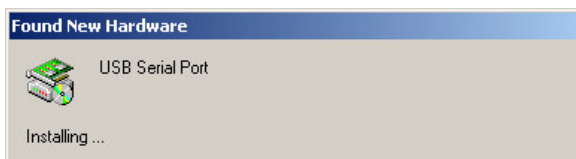
7) Choose location on CD where drivers are and accept by pressing **OK**



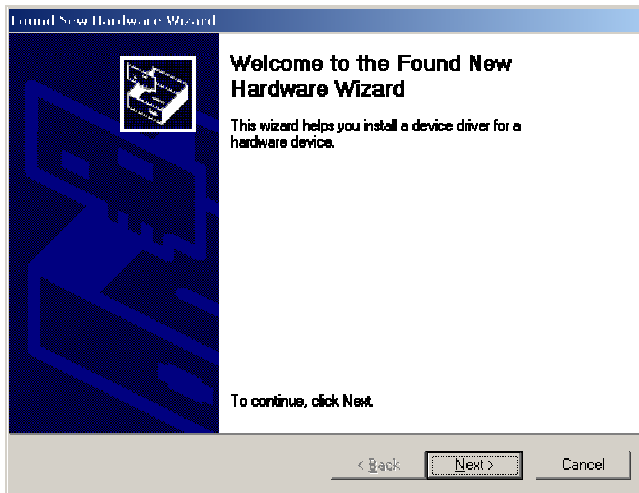
8) Click **NEXT** to confirm location of installed drivers.



9) Installation of main driver eXtreme are finished – please click on **FINISH** to follow to second step of installation – Virtual COM Port called VCP.



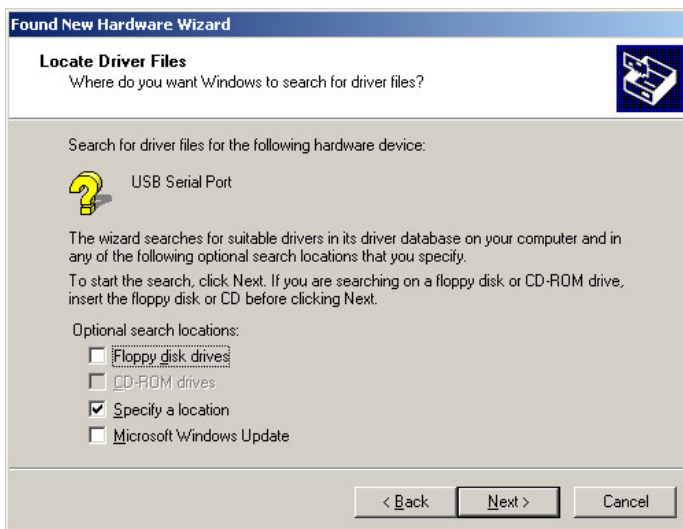
10) After finishing installing of main driver automatically new hardware will be found called USB Serial Port and Window below will open.



11) Choose **NEXT**



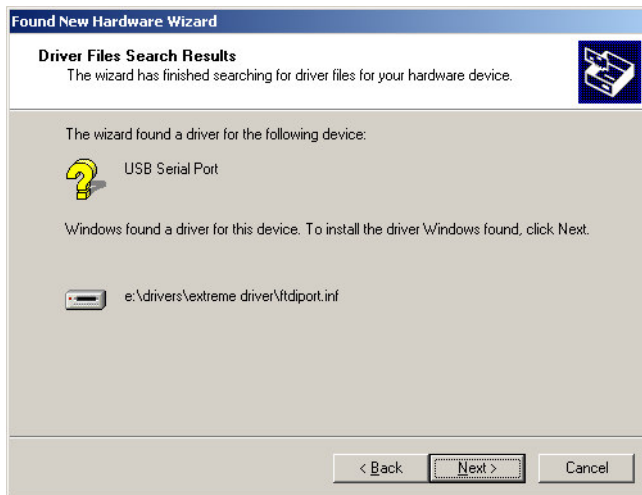
12) Choose "Search for a suitable driver for my device" and click **NEXT**



13) Check **"Specify a location"** and click **NEXT**.



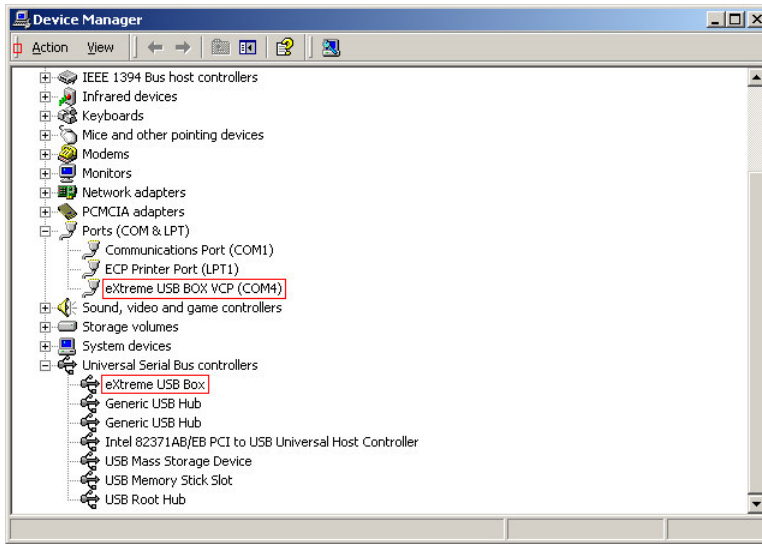
14) Choose location on CD where drivers are and accept by pressing **OK**



15) Click **NEXT** to confirm location of installed drivers.

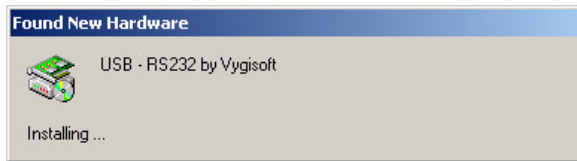


To check if installation are sucesfull you may check on Windows System Devices Properties and it schould looks like this (COMx settings depends on actual used COM – please refer to Chapter changing COM for more information)

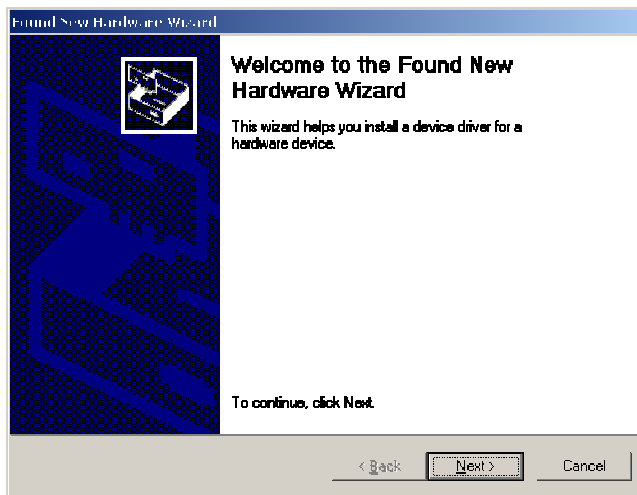


Manual Driver Installation for VYGIS USB-RS232 cable (switch position VYGIS)

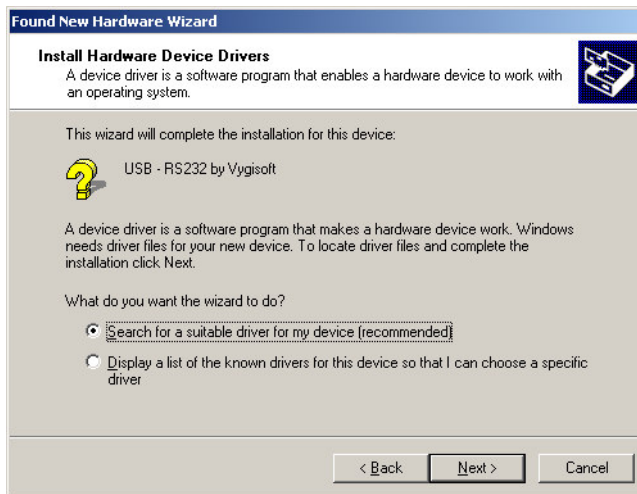
- 1) Connect hardware to your PC – system will find new device and notify about this fact.by short information.



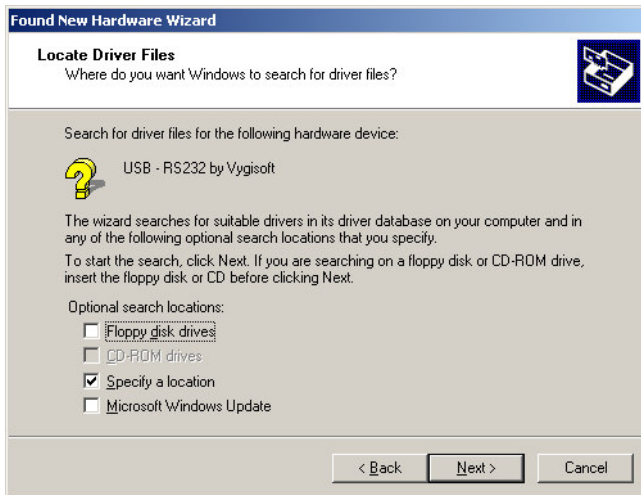
and Window below will open.



- 2) Click **NEXT**



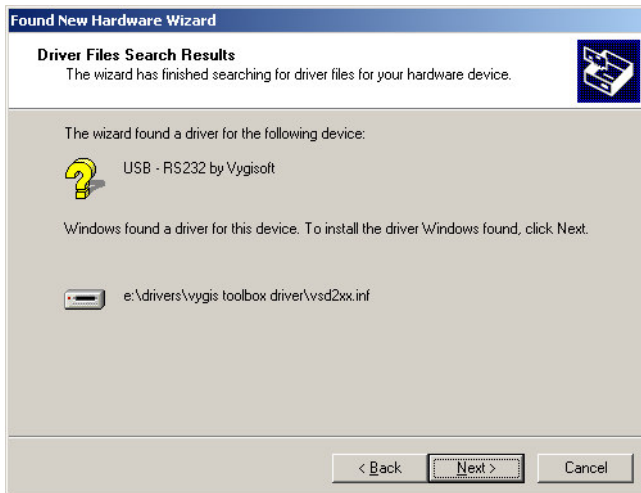
- 3) Choose “**Search for a suitable driver for my device**”and click **NEXT**



4) Check **“Specify a location”** and click **NEXT**.



5) Choose location on CD where drivers are and accept by pressing **OK**

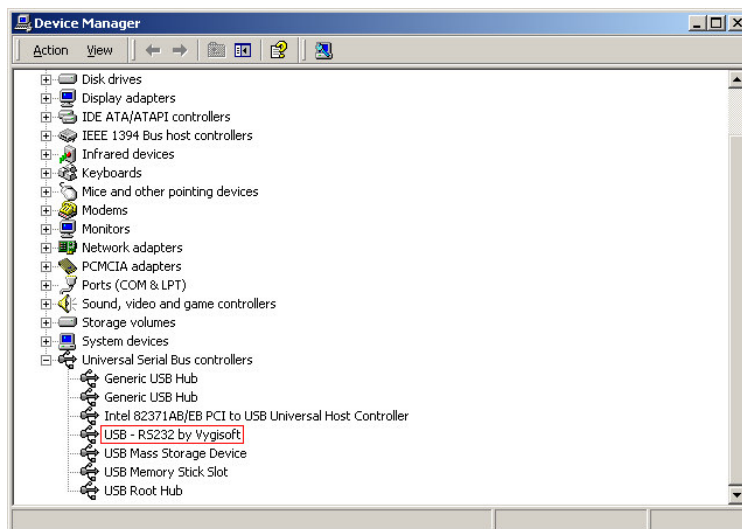


6) Click **NEXT** to confirm location of installed drivers.



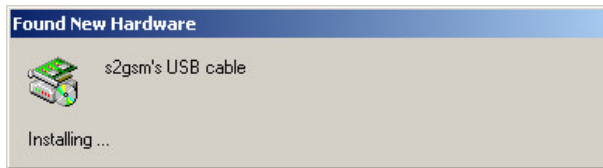
7) After pressing **FINISH** driver was correctly installed.

To check if installation are sucesfull you may check on Windows System Devices Properties and it schould looks like this

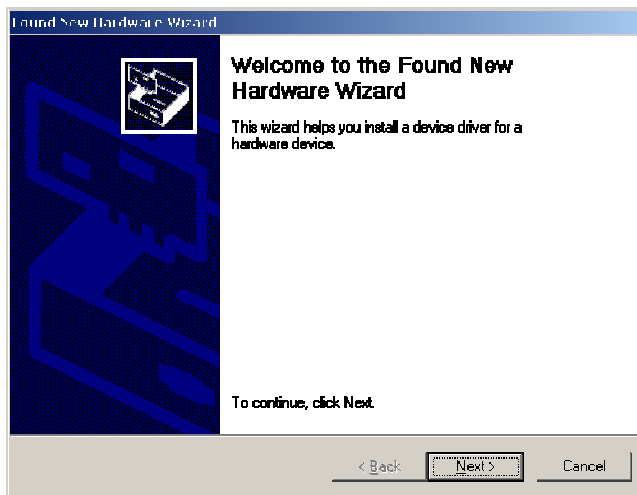


Manual Driver Installation for S2GSM cable (switch position S2GSM)

- 1) Connect hardware to your PC – system will find new device and notify about this fact by short information.



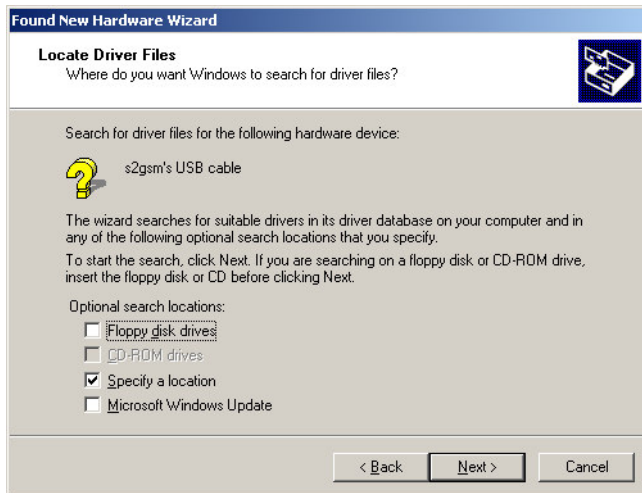
and Window below will open.



- 4) Click **NEXT**



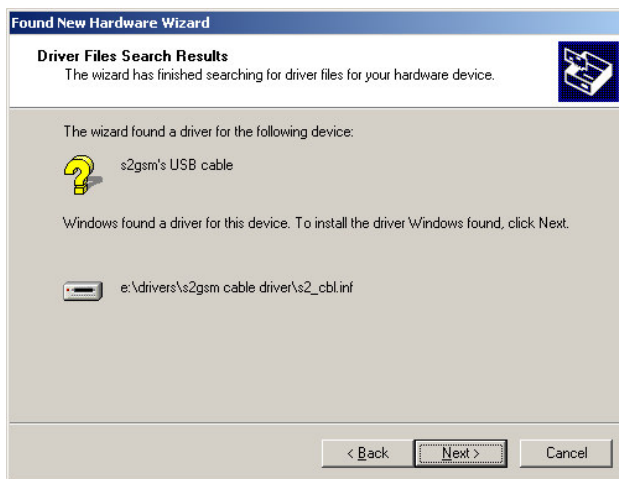
- 5) Choose "**Search for a suitable driver for my device**" and click **NEXT**



4) Check "Specify a location" and click **NEXT**.



8) Choose location on CD where drivers are and accept by pressing **OK**

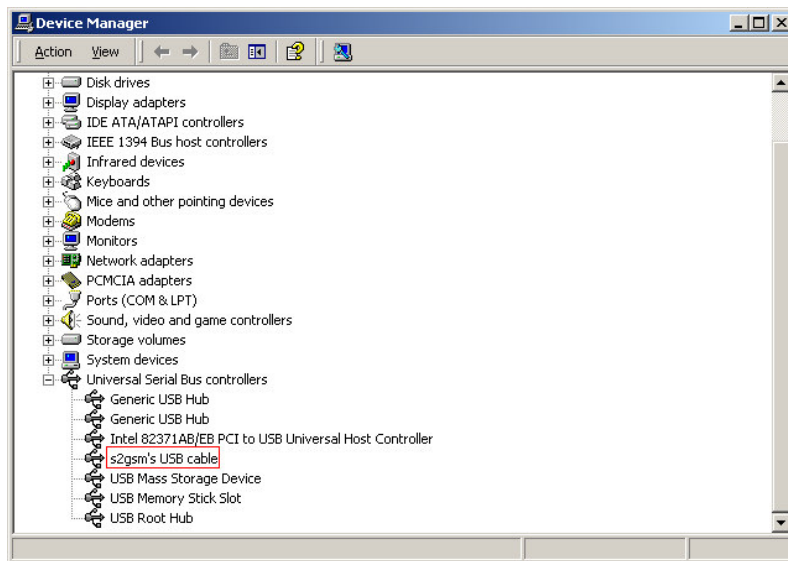


9) Click **NEXT** to confirm location of installed drivers.



10) After pressing **FINISH** driver was correctly installed.

To check if installation are sucesfull you may check on Windows System Devices Properties and it schould looks like this



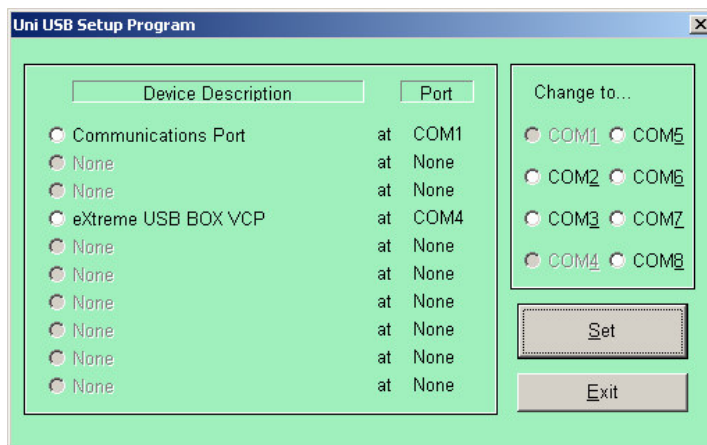
Port Administration software

On CD you will find small software called SetCOM – after you run it will appear in system tray as shown below.

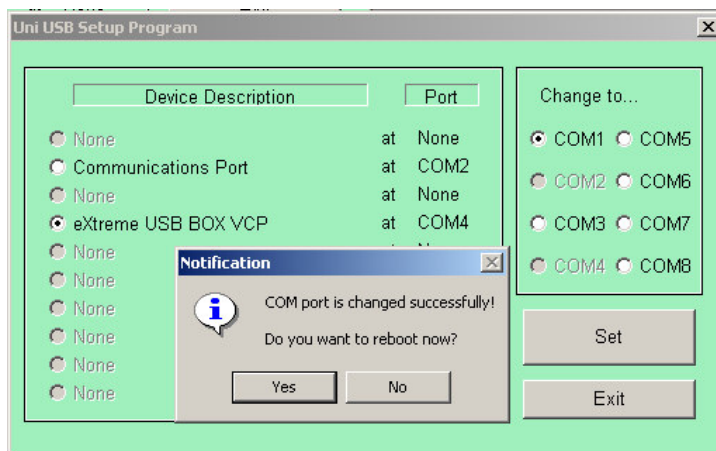


Software will run correctly and can manage COM ONLY if switch on back of hardware are switched to NORMAL position. Since S2GSM and VYGIS uses their own DLL D2xx drivers and not VCP only NORMAL mode can be used for change COM port association.

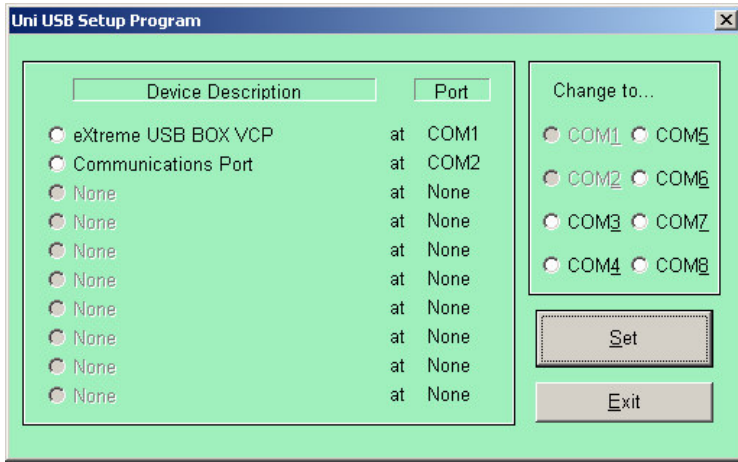
To run tool just double click on Taskbar icon:



Choose product name and port that you want to change and choose new COM port – then click SET.

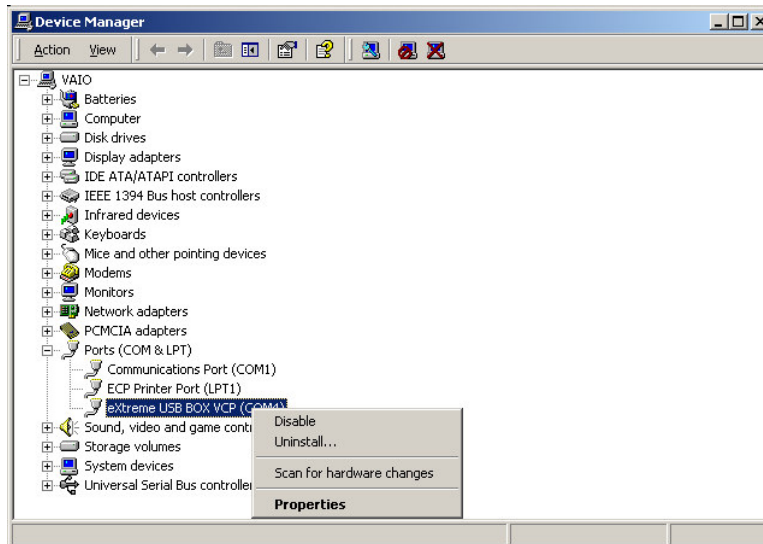


If computer need to be restarted you will be informed about this.

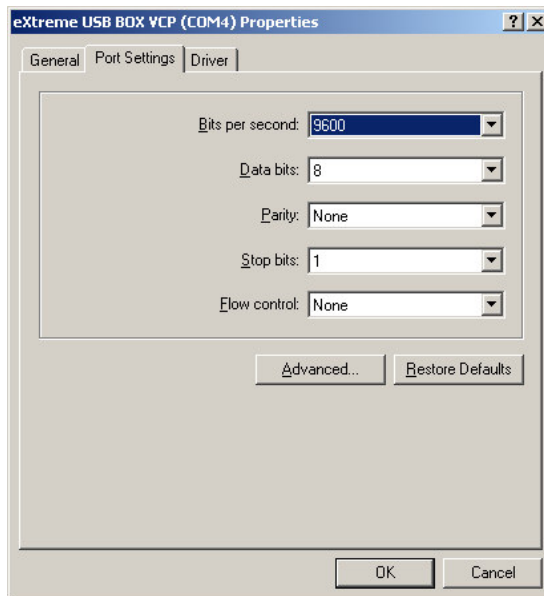


Manual Port Administration

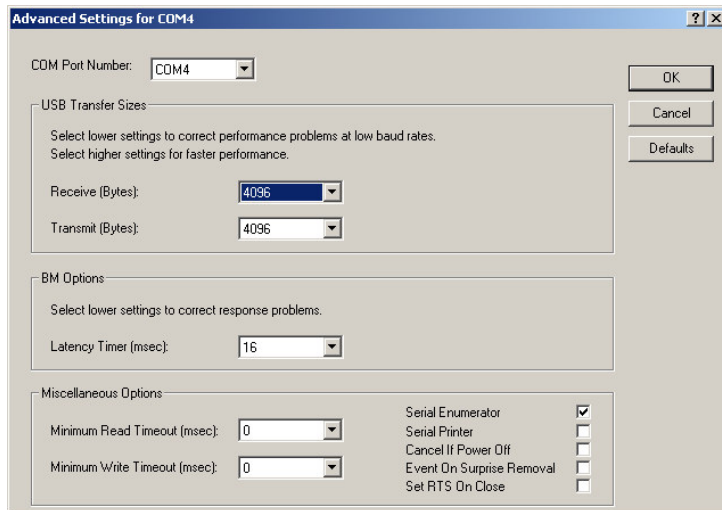
Go to System and Devices and click right mouse button on eXtreme USB Box VCP under Ports (COM & LPT) as shown on below picture:



After choose **Properties**



Choose Bit per seconds and change to highest available speed (921000 kbs). For **Advanced settings** please click on **Advanced** – a window as below will appear



You may change here all specification of transmission as:

- packet Rx/Tx size
- latency time
- timeout for Rx/Tx in msec
- RTS on Clone
- association of COM

etc.